



AMERICAN CLEANING SERVICE PRESENTS

Cleaning For A Healthy Facility

When Its About More Than Appearance

**ACTIONABLE TIPS TO START BUILDING
YOUR FACILITY HEALTH PLAN**

**AMERICAN
CLEANING
SERVICE
CO.**



A FACILITY HEALTH PLAN AND YOUR BUSINESS

Great Plans Are How Businesses Adapt To New Challenges

LIMIT THE SPREAD OF BACTERIA



Reduce Your Risks Of Illness

Business that take the time to recognize potential hazards in the work environment and develop policies and procedures to ensure employees can do their jobs safely experience numerous advantages ranging from employee satisfaction to increase ROI

Strengthen Positive Public Image

Employers should want to be viewed as health conscious and sustainable by their employees, customers and the public. Not having a plan in place could be disastrous while costing an organization financially and in public perception.

KEEP EMPLOYEES HEALTHIER

Caring For Your #1 Asset

One of a businesses top assets are their employees. Workplace health and safety are among the top criteria employees consider when evaluating a new job offer thus it should equally be a priority for management.

Improving Company Culture & Morale

Recruiting and retaining top talent is easier for organizations that provide safe and comfortable workplaces that care for employee well-being. Who would want to knowingly put themselves at risk?



ARE BUSINESSES REALLY AFFECTED?



It's No Surprise Sick Employees Actually Cost Money

Illness-related lost productivity costs US Businesses about \$530 billion per year, per a new report from the Integrated Benefits Institute (IBI), a nonprofit health and productivity research organization. That amounts to 60 cents for every dollar employers spend on health care benefits.

HOW A FACILITY HEALTH PLAN CAN IMPROVE BUSINESS



Increase In Productivity

An organization-wide focus on health and sanitation leads to employee satisfaction and higher worker productivity. This in turn can exponentially drive short-term revenue growth and ultimately support long-term sustainability.

Enhance Customer Experience

With recent developments in the spread of disease a new level of cleanliness will also be expected by customers and visitors. Soon it will not be uncommon for patronage to drop if a business is not prepared to consistently meet that expectation.



CLEANING FOR HEALTH

VERSUS

CLEANING FOR APPEARANCE

COMPARING THE 2 TYPES OF CLEANING
FOR A HEALTHY ENVIRONMENT



Cleaning For Health Down To A Microscopic Level

The scientific process is used To both clean and disinfect surfaces creating a healthier environment for occupants

Disinfectant cleaners are used on high touch horizontal and vertical surface in all areas

Disinfectant cleaner dwell times are incorporated to kill bacteria through-out the entire facility.

Regular carpet cleaning schedules are used throughout the entire building

Labor is directed to cover high touch areas with increased frequency

Enhanced cross-contamination efforts when considering tools, equipment, & safety

Electrostatic spraying is incorporated in the cleaning process to control virus contamination



Cleaning For Appearance On A Surface Level

Focus is on making areas look clean with bacterial control mostly in personal use areas

General cleaning process to remove dust & soils focusing on aesthetics, not on the occupant's health

Detergents are sprayed and wiped off immediately. Disinfectant cleaners are only used in restrooms and food surface areas

Carpets are cleaned only when necessary, or appearance gets poor

High touch areas are cleaned on a periodic schedule for appearance

Cross-contamination segregates tools and equipment from restroom surfaces vs general surfaces

Electrostatic spraying is not incorporated in the cleaning process

PREPARING BUILDINGS TO BE HEALTHY ENVIRONMENTS

Tips To Reduce Bacteria And The Spread Of Disease



CLEAN AND DISINFECT FREQUENTLY TOUCHED OBJECTS AND SURFACES

Provide disposable disinfectant wipes so that commonly used surfaces (e.g. doorknobs, keyboards, remote controls, desks, other work tools and equipment) can be wiped down by employees before and after each use.

Consider the use of Professional Disinfectant Specialists that are highly visible and continually disinfect frequently touched areas.

PROVIDE RESOURCES THAT PROMOTE A HYGIENIC AND SAFE ENVIRONMENT

Place posters that encourage hand hygiene and coughing/sneezing protocol to help stop the spread at the entrance to your workplace and the rest of the building.

Make sure you are stocked to provide tissues, no-touch trash cans, hand soap, alcohol-based handrubs containing at least 70 percent alcohol, disinfectants, and disposable towels for workers to clean their work surfaces.



PREVENTATIVE MEASURES FOR TOUCH

Install touchless fixtures such as door openers, faucets, toilet flushometers, and dispensers in all restrooms, replacing air hand dryers with towels.

Add pre-packaged utensils in single dispensing unit in all breakrooms and cafeterias

Consider the use of physical barriers where face to face interaction is common between employees and customers, such as clear plastic sneeze guards.

STAY IN THE KNOW, STAY IN THE NOW.

Monitor public health communications about COVID-19 recommendations.

Post in common areas, update consistently, and ensure that workers have access to that information.



TRAINING EMPLOYEES TO MAINTAIN HEALTHY ENVIRONMENTS

Top Tips For Health Conscience Employees



ENCOURAGE ALTERNATE FORMS OF COMMUNICATION

Minimize contact among workers, clients, and customers by replacing face-to-face meetings with virtual alternatives even when in the office.

Many times working through video conferencing or collaboration software has been known to improve scheduling efficiency and increase overall team productivity

Avoid using other employees' phones, desks, offices, or other work tools and equipment, when possible.

EMPOWER EMPLOYEES THROUGH KNOWLEDGE

Train workers who need to use PPE on the use and context of their current and potential duties.

Training material should be easy to understand and available in the appropriate language and literacy levels for all workers.

Require regular hand washing or use of alcohol-based hand sanitizer. Workers should always wash hands when they are soiled and after removing any PPE.



ESTABLISH SELF-SANITIZATION RESPONSIBILITY

Hand sanitizer availability in high traffic lobbies, restrooms, breakrooms, cafeterias, stairwells, elevators, conference/meeting rooms, and office areas.

Encourage employees to disinfect frequently touched objects and surfaces such as workstations, keyboards, telephones, handrails, and doorknobs.

Clean surfaces prior to disinfection.

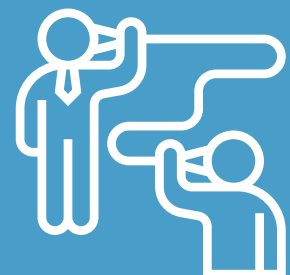


DEVELOP COMMUNITY SUPPORT

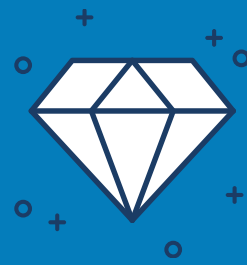
Collaborate with workers to designate effective means of consistently communicating important COVID-19 information.

Provide up-to-date education and training on risk factors and protective behaviors

Ensure that psychological and behavioral support is available to address employee stress.



REDUCE OCCUPANCY DENSITY



Tips to help decrease the potential spread of threats amongst occupants in your facility.

SCHEDULE OR STAGGER OCCUPANCY LIMITS

Establish alternative days or extra shifts that reduce the total number of employees in a building or facility at a given time, allow them to maintain safe distancing.



ENFORCE PHYSICAL DISTANCING

Establish and post max occupancy limits in confined areas. Set priority of no more than 2-4 people allowed in an elevator cab (size dependant)

CONTROL THE FLOW OF TRAFFIC

Create directional workflow patterns for employees entering the workplace and through-out to minimize overlap.



THE FENG SHUI OF SEPERATION

Workstation distancing: rearrange furniture, remove chairs from conference and break rooms to encourage distancing

LIMIT ACCESS IN CLOSE QUARTERS

When appropriate, limit employee's, customer's, and visitor access to the workplace or restrict access to certain workplace areas. (cafeterias, designated conference rooms and lobbies.)



American Cleaning Services

ENHANCED CLEANING AND DISINFECTION SERVICES

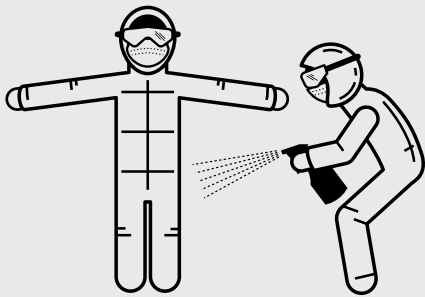
Cleaning Beyond The Standard Routine

AN ENHANCED DISINFECTION PLAN

Proper cleaning and disinfection are effective ways to minimize the spread of pathogens through surface contact.

Guidance from the CDC indicates that routine cleaning will be appropriate for most areas. Certain high contact surfaces may need additional cleaning.

While precautionary steps and established protocol help minimize the risk inside a facility, outside consulting can help ensure that your facility is prepared to be safely occupied by your employees, customers, and visitors at any time.



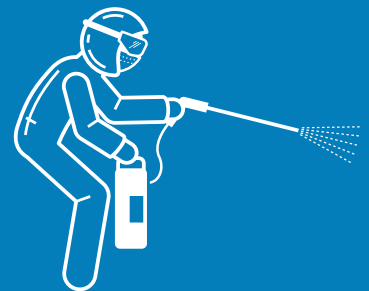
PROVIDING EXPERTLY TRAINED TEAMS

American Cleaning Service employees are trained in infection control and hand hygiene techniques for protection of any parties involved.

They are ready to be deployed in your facility with all the necessary personal protective equipment such as gloves and goggles per manufacturer's recommendations.

ADDITIONAL SERVICES WE OFFER TO ENSURE THE HEALTH OF YOUR FACILITY AND IT'S OCCUPANTS

- Preventative Wipe down: Proactive treatment of areas with suspect exposure
- Full Disinfect: Reactive treatment of areas with confirmed exposure
- Carpet/Soft Surfaces Clean/disinfect
- Shared Desk Surfaces - disinfect
- Cafeteria/Food Service areas - General cleaning, disinfect
- Disinfect High Contact Surfaces
- Breakroom/Canteen Areas - additional disinfect
- Customer Facing Areas - additional disinfect
- Retail Non-Customer Facing - additional disinfect
- Door handles, railings, elevator buttons, faucets, soap dispensers, door opener touch pads



HELPING YOUR FACILITY GET UP TO SPEED

American Cleaning Services is prepared to work with you to create a custom Facility Health Plan and begin building the foundation for a proper scope of work that focuses on cleaning for health, not just appearance.



Click To Learn More

